

How to Register for



A Guide for Our Students
Splash Fall 2019

What is Splash?



- An educational program run by **Stanford ESP**
- Stanford ESP (Educational Studies Program) is a volunteer student group of Stanford University

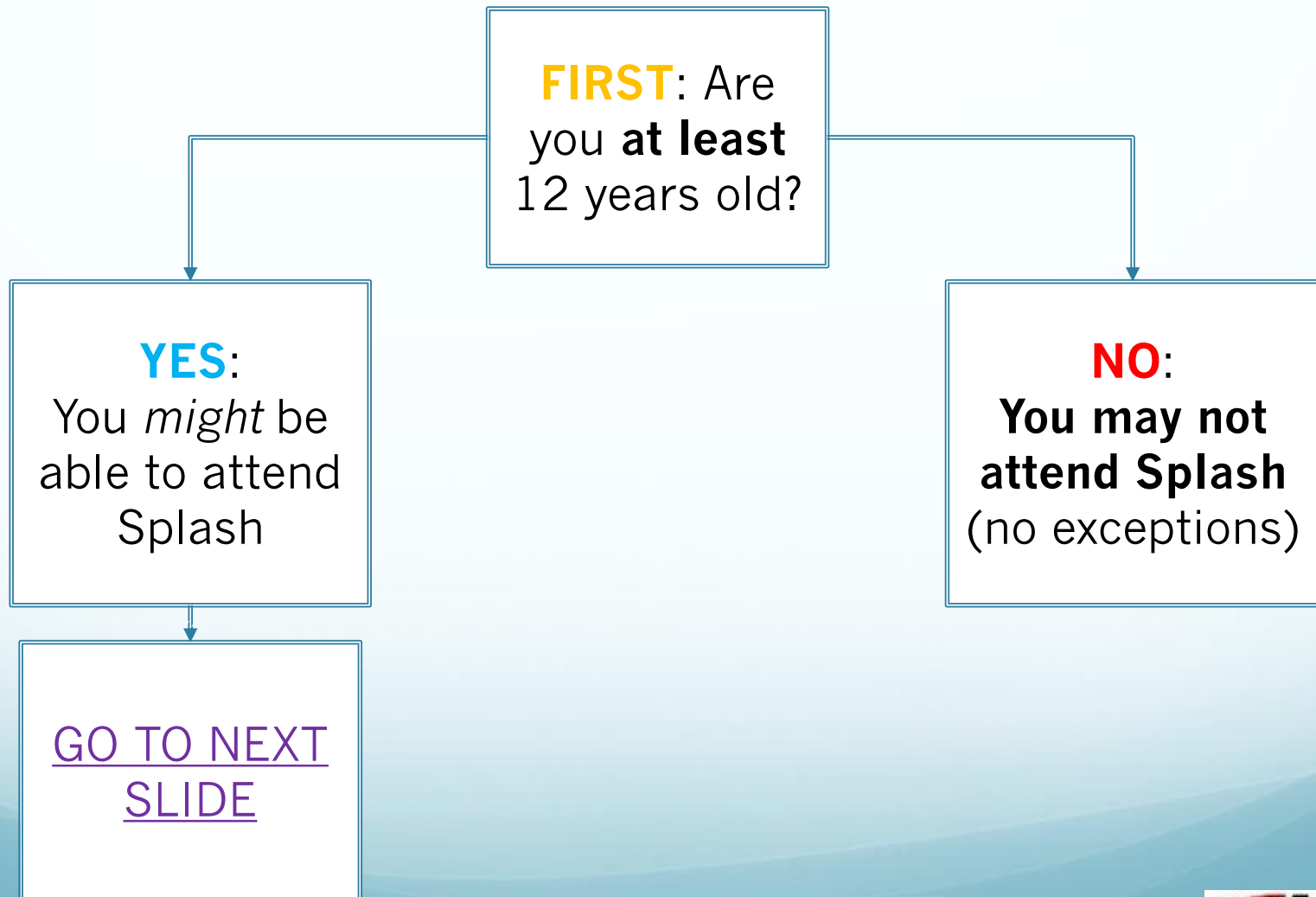
Want to be a Student at Splash?



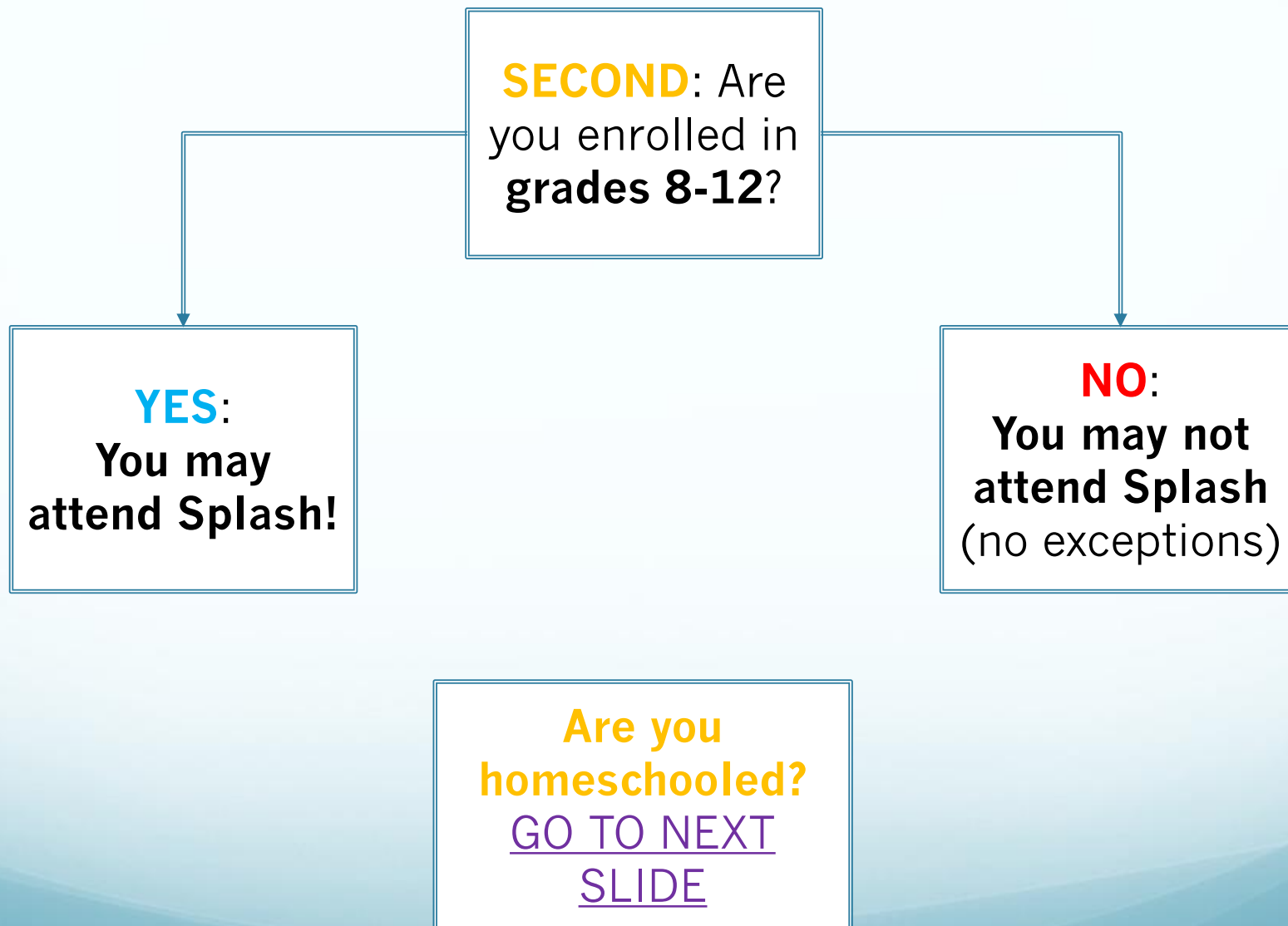
- Students must meet the **age and grade** requirements to participate (**see next slides**)
- No **restrictions** on school, area, or academic performance
- **No exceptions** (sorry!)
- *If you provide false information about your grade and/or age, then you will no longer be eligible to participate in Splash*

Email stanfordesp@gmail.com to make grade/DOB changes

Are you eligible to participate in Splash?



Are you attending school?



Are you homeschooled?

OR

SECOND: If you follow a conventional grade standard: are you in **grades 8-12** according to the program you follow?

SECOND: If you do **not** follow a conventional grade standard: are you **at least 12 years old**?

NO:
You may not attend Splash
(no exceptions)

YES:
You may attend Splash!

NO:
You may not attend Splash
(no exceptions)

YES:
You may attend Splash!

You must answer **YES** to one of the above questions to be eligible to attend Splash (if homeschooled)

Want to be a Student at Splash?



- **Tuition fee** is \$40 per student. There is no longer a sibling discount.
- Tuition covers **entire event**, no matter the number of classes taken or number of days attended

Want to be a Student at Splash?



- Students **must** bring a **completed waiver** signed by a guardian or parent
- This is a **legal** requirement by the University, **students without the waiver cannot participate in Splash**
- **Waiver for Fall 2019** found here: stanfordesp.org/waiver
 - Please note the *new medical portion*

So How Do I Register?

- First, go to <https://stanfordesp.org/> and make **your own student account** on our website
- Each individual student needs their own **unique** account
- Parents make **parent accounts**, parent accounts **cannot** register for Splash

So How Do I Register?

- A student account allows you to register as a participant at a Splash event by signing up for classes
- **You cannot sign up for Splash classes without a student account**
- Student accounts are notified of the start of each Splash registration period

So How Do I Register?



Learn

Get Involved

username

password

[Help](#) [Create Account](#)

Welcome to Splash!

Education for students, by students

SAVE THE DATE:

**Splash Fall 2016 is
December 3-4**

*Sign in or create an account
above for account-specific
details and links*

For Splash Students

Click the "Learn" tab for
more information.

For Splash Teachers and Volunteers

Click the "Get Involved" tab
for more information.

Make an
account to
register for
Splash

[Directions to Splash](#)

Splash is the program that brings high school and middle school students from everywhere to Stanford's campus for a two-day learning extravaganza. Classes are taught by Stanford undergraduate students, graduate students, and postdoctoral associates.



See what it's all about

Want Updates? [Create an account](#) and we will keep in touch.

12 So How Do I Register?



Learn

Get Involved

Learn Everything

Splash Spring 2017 is April 22-23, 2017.

Click **here** to access registration



The **Learn** tab has all student-related info

Important registration dates and details:

Saturday, March 18: **Course Catalog** available by 12:00PM

Sunday, March 19: **PHASE ZERO** opens at 5:00PM

Saturday, March 25: **PHASE ZERO** closes at 11:59pm

Sunday, March 26: **Phase Zero Results** available and **Class Lottery Phase** opens at 5:00PM*

Saturday, April 1: **Class Lottery Phase** closes at 11:59PM*

Sunday, April 2: **Class Lottery Results** available and **FCFS Phase** opens at 5:00PM*

Saturday, April 8: **FCFS Phase** closes at 11:59PM*

*Only students selected in Phase Zero may proceed to the Class Lottery and FCFS phases

Username

Password

[Help](#) [Create Account](#)

SAVE THE DATE:

Splash Spring 2017 is April 22-23

Sign in or create an account above for account-specific details and links

For Splash Students

Click the "Learn" tab for more information.

—Student Reg Guide

For Splash Teachers and Volunteers

Click the "Get Involved" tab for more information.

Navigation

Home
Learn

The Registration Process

Student registration is broken down into **three phases**:

0. Student Lottery Phase (“Phase Zero”)

- Opens at **5:00pm** on **10/23**, closes at **11:59pm** on **10/26**
- This is when you indicate interest in the program and enter a lottery to determine which students can register for the program

1. Class Lottery Phase

- Opens at **5:00pm** on **10/27**, closes at **11:59pm** on **11/2**
- This is when you set your preferences for classes

2. First-Come First-Serve (FCFS) Phase

- Opens at **5:00pm** on **11/3**, closes at **11:59pm** on **11/9**
- This is when you fill in the empty slots in your schedule with the remaining open classes

The Student Lottery Phase

“Phase Zero”

(10/23 – 10/26)

The Student Lottery Phase

Students express **interest** in the program



Students receive confirmation that they are entered into the student lottery



Lottery runs, **randomly** selecting students that are eligible to register for the program

The Student Lottery Phase



- This process is **random**, but **fair**
- Only students selected in the student lottery may proceed to register for the program and select class lottery preferences
- More details can be found here:
stanfordesp.org/learn/phasezero-FAQ.html
- Please Note: There is absolutely no advantage to entering the student lottery exactly when Phase Zero opens

17 The Student Lottery Phase



Phase Zero (Student Lottery) for Splash Spring 2017

Welcome to Phase Zero, or the Student Lottery, for Splash Spring 2017. Any student that submits interest to the program before the end of phase zero will receive a lottery ticket. We will then select a random portion of these tickets that will then have guaranteed entry into the program. The class lottery and FCFS phases remain as they have been in previous programs. Only students selected in the student lottery may proceed to register for classes.

To enter the student lottery, please complete one of the two options below:

Just click this button...

Create a New Lottery Ticket
(Use this option if you want to start a new lottery ticket for yourself or for a group)

- 1) Just click the button below:

OR

Join An Existing Lottery Ticket
(Use this option if you want to join a ticket that someone else has already made)

- 1) Begin typing another student's username below
- 2) Select the correct username
- 3) Click the button

Note: the student must already have a lottery ticket.

...or follow these instructions...

18 The Student Lottery Phase



Phase Zero (Student Lottery) for Splash Spring 2017

Welcome to Phase Zero, or the Student Lottery, for Splash Spring 2017. Any student that submits interest to the program before the end of phase zero will receive a lottery ticket. We will then select a random portion of these tickets that will then have guaranteed entry into the program. The class lottery and FCFS phases remain as they have been in previous programs. Only students selected in the student lottery may proceed to register for classes.

This is confirmation that you are entered into our student lottery.

...then you are in the lottery!

You are the only student in your lottery group.

No further action is required at this time.

If you would like to join a different lottery group, please click the button below for further instructions:

[I Would Like To Join A Different Lottery Group](#)

Have a sibling or a close friend you want to attend Splash with? Click here!

19 The Student Lottery Phase



This is confirmation that you are entered into our student lottery.

You are the only student in your lottery group.

If you clicked this button...

No further action is required at this time.

If you would like to join a different lottery group, please click the button below for further instructions:

I Would Like To Join A Different Lottery Group

- 1) Begin typing another student's username below
- 2) Select the correct username
- 3) Click the button.

Note: the student must already have a lottery ticket.

...put the other student's username here...

Submit

...then click submit!

20 The Student Lottery Phase



Phase Zero (Student Lottery) for Splash Spring 2017

Welcome to Phase Zero, or the Student Lottery, for Splash Spring 2017. Any student that submits interest to the program before the end of phase zero will receive a lottery ticket. We will then select a random portion of these tickets that will then have guaranteed entry into the program. The class lottery and FCFS phases remain as they have been in previous programs. Only students selected in the student lottery may proceed to register for classes.

This is confirmation that you are entered into our student lottery.

The following students are in your lottery group:

rweasley (grade 8)
hgranger (grade 7)
hpotter (grade 10)
dmalfoy (grade 7)



Your lottery info should now be updated!

Note: Your lottery group is at the maximum size (4)

No further action is required at this time.

If you would like to join a different lottery group, please click the button below for further instructions

I Would Like To Join A Different Lottery Group



Made a mistake?
Just click this button again

The Class Lottery Phase (10/27 – 11/2)



(Click for Video Tutorial)

The Class Lottery Phase

Students pick **interested** and **priority** classes



Lottery runs, **randomly** enrolling students in classes they marked as interested



Lottery results released, students have a **preliminary schedule**

The Class Lottery Phase



- This process is **random**, but **fair**
- Students specify **all** the classes they would be **interested** in taking per **timeslot** (e.g. 10 AM – 10:45 AM on Saturday)
- You can express interest in (star) as many classes as you want (Step 1, page 24)
- Students can choose up to 3 **priority classes per timeslot** (Step 2, page 25)
- Don't forget to do **both steps!**
- Only students selected in the student lottery phase may register during this phase

The Class Lottery Phase



LEARN

TEACH

VOLUNTEER

Splash! Spring 2014 Student Registration

Step 1: Star Classes that Interest You

Save and continue

Search:

Collapse (-)

Category:

- Mathematics and Computer Science
- Physical Science
- Biological and Medical Science
- Hobbies
- Writing, Literature, and Language
- Social Science
- Engineering
- Skills
- Visual and Performing Arts

Filter classes by checking categories

Navigation

- Home
- Learn
- Teach
- Volunteer
- Course Catalogs
- About Splash
- FAQs
- Contact Us

Like 3.3k Follow

B3516: The Inner Life of a Cell: How Our Cells Use DNA to Give Us Everything We Need

Chris Miller

★ Click the star to mark this class as interested.

This class will explore the basic machinery inside of a typical human cell and how it uses this equipment to transform DNA into proteins and other molecules that are essential for everyday life, while also providing students with an appreciation of how cells accomplish these extraordinary functions—automatically and with amazing speed and accuracy.

Grades: 10 - 12

Difficulty: ***

Prerequisites: High-school biology that includes a basic understanding of cell structure and DNA

| Section | Meeting Time | Enrollment |
|-----------|--------------|------------|
| Section 1 | | 0/200 |

Star classes that interest you

Click "Save and continue" when you are done

R3689: Language Around the World: Introduction to Linguistic Typology

Bonnie Krejci

★ Click the star to mark this class as interested.



The Class Lottery Phase



Step 2 – Rank the top classes for each time

For each time block during Splash! Spring 2014, select ONE class as your top priority class.

For each timeslot...

Classes for [REDACTED]
Classes beginning on Saturday, April 12
Block 1

...choose your top 3 classes

| | |
|---------------|------------------|
| Sat 10am-11am | Nothing Selected |
| Sat 11am-12pm | Nothing Selected |
| Sat 12pm-1pm | Nothing Selected |
| Sat 1pm-2pm | Nothing Selected |
| Sat 2pm-3pm | Nothing Selected |
| Sat 3pm-4pm | Nothing Selected |
| Sat 4pm-5pm | Nothing Selected |
| Sat 5pm-6pm | Nothing Selected |

Lunch is selected in the FCFS phase

[\[edit rankings\]](#)
[\[edit rankings\]](#)
[\[edit rankings\]](#)
[\[edit rankings\]](#)
[\[edit rankings\]](#)
[\[edit rankings\]](#)
[\[edit rankings\]](#)

Classes beginning on Sunday, April 13
Block 2

| | |
|---------------|------------------|
| Sun 10am-11am | Nothing Selected |
| Sun 11am-12pm | Nothing Selected |
| Sun 12pm-1pm | Nothing Selected |
| Sun 1pm-2pm | Nothing Selected |
| Sun 2pm-3pm | Nothing Selected |
| Sun 3pm-4pm | Nothing Selected |
| Sun 4pm-5pm | Nothing Selected |

To improve your chances of getting into classes you are interested in, you should **star classes** and **choose your top choice** for **EVERY** timeslot

[\[edit rankings\]](#)
[\[edit rankings\]](#)
[\[edit rankings\]](#)
[\[edit rankings\]](#)
[\[edit rankings\]](#)
[\[edit rankings\]](#)
[\[edit rankings\]](#)

The Class Lottery Phase



Choose your top 3 choices from the dropdown menu

Student Registration

lock. We highly recommend you mark a class for every priority slot to ensure a

Step 2: Rank and star classes starting at Sun 1 PM

Save and continue

1. Select a class below. (Priority/1)
2. Select a class below. (Priority/2)
3. Select a class below. (Priority/3)

You have starred 1 classes for this timeblock.

Show only starred classes

Make sure you click **“Save and continue”** when you are done

Your starred classes are shown below

From Development to Cancer

class as interested.

Does DNA determine exactly how a living organism will look or behave?

How do all the many cells in the human body function differently despite having the same DNA?

Discover how non-genetic factors in our cells lead to a diversity of cell states or multicellular organisms, but also causing serious problems such as cancer when

Grades: 9 - 12

Click here to also see classes you didn't star in **Step 1**

You won't have any classes to choose from if you didn't star any classes that are during this timeslot in **Step 1**

The Class Lottery Phase



- As long as students input their class preferences **by the time the lottery closes (11/2)**, all registered students are considered **equally** for classes
- Preferences are submitted each time you click **“Save and continue”**
- If you think you submitted class lottery preferences, log on to stanfordesp.org and check that you see your preferences on the “Class Lottery Registration” link

The Class Lottery Phase

- You are **NOT** automatically enrolled in classes you pick during the lottery phase
- **The lottery must place you in a class for you to be enrolled during this phase**
- You will **never** be placed in a class you didn't **star** or didn't set as one of your **top 3 choices**, so make sure to star as many classes as possible (10+ per slot)

29 The Class Lottery Phase



Results of the lottery will be available by **5pm on November 3rd**

Your preliminary schedule (with classes you received) is at the bottom of the "Choose Classes" page

These time slots are still empty

Classes for [Redacted]

| Saturday, November 07 | |
|-----------------------|----------------------------------------------------------------------------------------------------------------|
| Sat 10am-11am | Enrolled: B4632s1: Epidemiology in the Galápagos Islands: Are introduced diseases threatening endemic species? |
| Sat 11am-12pm | Enrolled: S4636s2: Fixed Mindsets and Stereotype Threats |
| Sat 12pm-1pm | Enrolled: L4454s2: Lunch Period |
| Sat 1pm-2pm | Enrolled: B4561s2: The Power of Algae |
| Sat 2pm-3pm | Enrolled: B4561s2: The Power of Algae (continued) |
| Sat 3pm-4pm | Nothing Selected |
| Sat 4pm-5pm | Nothing Selected |
| Sat 5pm-6pm | Nothing Selected |
| Sunday, November 08 | |
| Sun 10am-11am | Enrolled: H4720s1: Chai tea?: The history and rise to fame of an American misnomer |
| Sun 11am-12pm | Enrolled: L4479s6: How to Talk Your Way into a Job. |
| Sun 12pm-1pm | Enrolled: L4453s2: Lunch Period |
| Sun 1pm-2pm | Nothing Selected |
| Sun 2pm-3pm | Enrolled: B4452s1: The Biology of Hollywood |
| Sun 3pm-4pm | Enrolled: B4452s1: The Biology of Hollywood (continued) |
| Sun 4pm-5pm | Nothing Selected |
| Sun 5pm-6pm | Enrolled: H4733s2: Mightier than the Sword: The Greatest Pens (and Pencils) Ever Made |

These are your **enrolled** classes



30 Didn't Get a Class You Wanted to Take?



- Unfortunately, the lottery is random so sometimes the odds are against you
- Some classes have only a small number of open spots (10-20) and hundreds of students who are vying for those spots
- **You could receive few classes in the lottery if you do not select many (10+) classes as “interested”**

The First-Come First-Serve (FCFS) Phase (11/3 – 11/9)



(Click for Video Tutorial)

32 The First-Come First-Serve (FCFS) Phase



- After the lottery has run, **FCFS** will open and students can **enroll themselves** in **classes that still have open seats**
- You can also **remove** yourself from classes you are already enrolled in (careful, you can't undo this!)
- Other students may drop classes you are interested in; **check back periodically** for new openings
- Any changes you make are **final**, so think before changing your schedule!
- No **new students** may register during this phase

The FCFS Phase



Enroll in as **many open** classes as you like!

If you want to **drop a class**, click "remove"

Click "add class" to add a class to an empty time slot

You can't add a class to a timeslot in which you are already enrolled in a class

Classes for [REDACTED]

| Saturday, November 07 | | |
|-----------------------|----------------------------------------------------------------------------------------------------------------|-----------------------------|
| Sat 10am-11am | Enrolled: B4632s1: Epidemiology in the Galápagos Islands: Are introduced diseases threatening endemic species? | [remove] |
| Sat 11am-12pm | Enrolled: S4636s2: Fixed Mindsets and Stereotype Threats | [remove] |
| Sat 12pm-1pm | Enrolled: L4454s2: Lunch Period | [remove] |
| Sat 1pm-2pm | Enrolled: B4561s2: The Power of Algae | [remove] |
| Sat 2pm-3pm | Enrolled: B4561s2: The Power of Algae (continued) | |
| Sat 3pm-4pm | Nothing Selected | + add class |
| Sat 4pm-5pm | Nothing Selected | + add class |
| Sat 5pm-6pm | Nothing Selected | + add class |
| Sunday, November 08 | | |
| Sun 10am-11am | Enrolled: H4720s1: Chai tea?: The history and rise to fame of an American misnomer | [remove] |
| Sun 11am-12pm | Enrolled: L4479s6: How to Talk Your Way into a Job. | [remove] |
| Sun 12pm-1pm | Enrolled: L4453s2: Lunch Period | [remove] |
| Sun 1pm-2pm | Nothing Selected | + add class |
| Sun 2pm-3pm | Enrolled: B4452s1: The Biology of Hollywood | [remove] |
| Sun 3pm-4pm | Enrolled: B4452s1: The Biology of Hollywood (continued) | |
| Sun 4pm-5pm | Nothing Selected | + add class |
| Sun 5pm-6pm | Enrolled: H4733s2: Mightier than the Sword: The Greatest Pens (and Pencils) Ever Made | [remove] |

A class that says "Continued" means it lasts longer than a single timeslot

Lunch

- Lunch is **included** in the \$40 tuition
- Lunch tickets will not be provided/sold, however students **MUST** wear their **nametags** to get food on **BOTH DAYS**
- Lunch is provided at **either 12 PM or 1 PM**

Lunch



| | |
|-------------------------------------------------------------------|---|
| Update Your Profile <i>(required)</i> | ✓ |
| Student Registration Phase Zero <i>(required)</i> | ✓ |
| Sign up for Classes <i>(required)</i> | ✓ |
| Financial Aid Application | ✗ |

Sign up for lunch just like normal classes

Financial Aid

- One of the goals of Splash is providing **accessible education**
- If our tuition fee is a barrier to your participation due to financial hardship, you can **apply for financial aid** on our website
- The application is available during the FCFS phase (starting November 3)

Financial Aid



| | |
|-------------------------------------------------------------------|---|
| Update Your Profile <i>(required)</i> | ✓ |
| Student Registration Phase Zero <i>(required)</i> | ✓ |
| Sign up for Classes <i>(required)</i> | ✓ |
| Financial Aid Application | ✗ |

Click here to access
the financial aid
application

Financial Aid



Splash Fall 2016 Financial Aid Request Form

Financial limitations should not prevent anyone from participating in Splash. If this program is difficult for you and your family to afford, please apply for financial aid and we will do our best to accommodate you. Partial and complete scholarships are available, depending on need. We will take a look at your situation and notify you of our decision before the start of the program.

Please complete this form to request financial aid for Splash Fall 2016. You can always **Save Progress** to keep your work and return to this page at any time to continue filling it out. Once you're finished, please let us know by clicking **Complete**. If you've finished filling out the form, but you discover that information on the form is inaccurate or you wish to cancel the application, click **Mark as Incomplete**.

All information is completely optional. However, the better we can understand your current need, the easier it is for us to grant financial aid when necessary (and determine an appropriate amount).

Financial Aid Request for [REDACTED]

I qualify for free/reduced lunch at school

What is your annual household income (to the nearest \$1,000)?

Please describe your family's financial situation

Someone other than the student filled out any part of this form

Please provide
**as much info
as possible** on
this form

The FCFS Phase



Cancel Registration

Confirm

If you **accept your final schedule** and **intend to attend Splash**, click **“CONFIRM”** at the bottom of the screen when logged in

On the Days of Splash

- All students **must check-in** at Splash starting from **9 AM**
- Students must have a completed waiver, the tuition fee, and a valid ID*
- Students will also receive a nametag
- Your nametag is your **ticket to lunch!**



*Student ID is preferred, original or copy is fine, this is to verify a student's grade and/or age

Paying for Splash

- Students have two options for payment:
 - 1. Prepayment through Eventbrite**
 - More details will be distributed via email
 - 2. Cash or check** at student check-in
- Checks must be made out to “**Stanford Educational Studies Program**” (our student group)

Questions? Contact Us

- FAQs can be found here:
stanfordesp.org/about/faq-general.html
- We are best reached by email at
stanfordesp@gmail.com
(please be as descriptive as possible)

